

LYNOTT'S *Lounge*

VENUE ADDRESS: 100 MELBOURNE ST, NORTHBRIDGE
VENUE BOOKER: LEE READER - LEE@MATCHLESSMUSIC.COM.AU
VENUE MANAGER: PAUL MOLONEY - PAUL.MOLONEY@GMAIL.COM

CAPACITY: SELLABLE CAPACITY 350 INCLUDING GUESTS
BAND / CREW MEMBERS ARE NOT INCLUDED IN SELLABLE
CAPACITY (ALL SHOWS CAN SELL TO 350)
VENUE HIRE: \$2.20INC PER PERSON VS \$200 MINIMUM
SOUND / LIGHTING: PROVIDED BY VENUE AT NO COST
DOOR PERSON: PROVIDED BY VENUE AT NO COST
TICKETING: WE ARE CONTRACTED TO OZTIX FOR ALL TICKETING. ALL
PRE SALE TICKETS MUST BE SOLD VIA OZTIX AND APPROVED
BY VENUE BEFORE GOING ON SALE

DOORS OPEN: 7:30 PREFERRED - EARLIER OPENS MUST BE PRE APPROVED
DOORS CLOSE: 12:00 PREFERRED - LICENSE TILL 2AM WHEN NEEDED
LATER CLOSES MUST BE PRE APPROVED

PLAYING TIMES: LIVE MUSIC 8:00 - 11:45 PREFERRED. MINIMUM 20 MINUTE
CHANGEOVERS ARE REQUIRED BETWEEN BANDS

LINEUPS: BOOKING AND PAYMENT OF ALL ENTERTAINMENT IS THE
RESPONSIBILITY OF THE PROMOTER. WE ARE HAPPY TO
SUGGEST QUALITY LOCAL SUPPORTS WHEN NEEDED

MERCHANDISE: MERCH BOOTH WITH DISPLAY AND STORAGE LOCATED
RIGHT OF STAGE NEAR SMOKERS AREA. PLEASE BYO
SELLER WITH FLOAT AND LIGHTING. DO NOT TAPE TO WALLS!

HOUSE BACKLINE: PROVIDED BY VENUE AT NO COST
DRUMS -
TAMA SUPERSTAR HYPERDRIVE 22BD/16FT/12RT
4 X HD BOOM STANDS
1 X HD HI HAT STAND
2 X HD SNARE STANDS
1 X DRUM STOOL
GUITAR -
2 X MARSHALL 1960A LEAD SPEAKER CABS
BASS-
1 X AMPEG 410HLF SPEAKER CAB

IF THE ABOVE IS NOT SUITABLE BANDS ARE WELCOME TO BYO
AS NEEDED. IF BACKLINE HIRE IS REQUIRED WE USE AND
RECOMMEND MATCHLESS MUSIC AND CAN SUPPLY TO SPEC
AT 10% DISCOUNT FOR VENUE USE

LYNOTT'S

Lounge

PA SYSTEM-

2 X D&B V10P
2 X D&B J SUBWOOFER
1 X D&B 30D AMPLIFIER
1 X D&B 40D AMPLIFIER

MONITORS-

4 X QUEST QM700
3 X QUEST QM700M
1 X QUEST HPI18SA SUBWOOFER
2 X QUEST QX4500

AMPLIFIER CONTROL-

1 X MIDAS M32
1 X MIDAS DL32
1 X LAKE LM26 WITH TABLET PC

MICS-

1 X SENNHEISER E902
3 X SENNHEISER E904
1 X SENNHEISER E604
2 X SENNHEISER E914
2 X SENNHEISER E906
6 X SENNHEISER E935
1 X SENNHEISER E835S
2 X SHURE SM57
2 X RADIAL J48 DI
2 X RADIAL MONO RDI
1 X RADIAL STEREO RDI

STANDS-

8 X K&M 210/6B TALL STANDS
2 X K&M 210/6B TELE STANDS
5 X K&M 259B SHORT STANDS
1 X K&M 25950 KICK STAND

LIGHTING-

MOVERS-

4 X MARTIN ERA300 PROFILE
4 X LIGHTSKY 1910 WASH

STATICS-

1 X CLAYPAKY STORMY STROBE
12 X NITEC TRI12LED PAR
4X NITEC 2WAY LED BLINDER

ATMOSPHERICS-

1 X UNIQUE2.1 HAZER

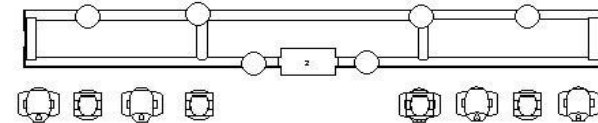
LIGHTINGCONTROL-

1 X CHAMSYS MINIWING
1 X TOUCHSCREEN PC
1 X EVENT124DMXSPLITTER

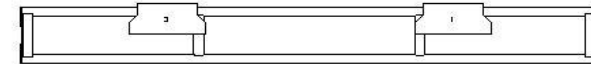
LYNOTTS LIGHTING PATCH

Light Sky 1910	Wash	REAR OUT SR	1
Light Sky 1910	Wash	REAR IN SR	25
Light Sky 1910	Wash	REAR IN SL	49
Light Sky 1910	Wash	REAR OUT SL	73
Martin ERA300	Profile	REAR OUT SR	159
Martin ERA300	Profile	REAR IN SR	180
Martin ERA300	Profile	REAR IN SL	201
Martin ERA300	Profile	REAR OUT SL	222
Nitec T12	Led Par	REAR OUT SR	97
Nitec T12	Led Par	REAR MID SR	125
Nitec T12	Led Par	REAR IN SR	129
Nitec T12	Led Par	REAR IN SL	133
Nitec T12	Led Par	REAR MID SL	137
Nitec T12	Led Par	REAR OUT SL	141
Nitec T12	Led Par	FRONT OUT SR	101
Nitec T12	Led Par	FRONT MID SR	105
Nitec T12	Led Par	FRONT IN SR	109
Nitec T12	Led Par	FRONT IN SL	113
Nitec T12	Led Par	FRONT MID SL	117
Nitec T12	Led Par	FRONT OUT SL	121
Nitec T12	Blinder	FRONT SR	300
Nitec T12	Blinder	FRONT SL	302
Stormy	Strobe	USC	149
Unique	Hazer	USC	511

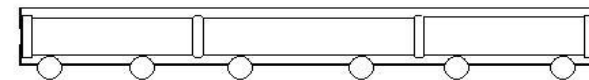
REAR TRUSS FRONT VIEW - TOWARDS CROWD



FRONT TRUSS FRONT VIEW - TOWARDS CROWD



FRONT TRUSS REAR VIEW - TOWARDS BAND



○ NITEC LED PAR

◻ LIGHT SKY WASH

◻ MAC BEAM 300

◻ 2 CLAY PAKY STORMY

◻ 4 NITEC LED BLINDER

LYNOTTS LOUNGE M32 PATCH

PATCH	BOX	WHAT	WHERE
1	1	KICK IN	USL
2	2	KICK OUT	USL
3	3	SNR TOP	USL
4	4	SNR BOT	USL
5	5	HH	USL
6	6	RACK 1	USL
7	7	RACK 2	USL
8	8	FLOOR	USL
9	9	OH SR	USL
10	10	OH SL	USL
11	11	BASS DI	USL
12	12	BASS MIC	USL
13	5	GTR SR 1	USR
14	6	GTR SR 2	USR
15		GTR SL 1	HOME RUN
16		GTR SL 2	HOME RUN
17	1	DI 1	USR
18	2	DI 2	USR
19	3	DI 3	USR
20	4	DI 4	USR
21	1	DI 5	DSC
22	2	DI 6	DSC
23	3	DI 7	DSC
24	4	DI 8	DSC
25	5	VOX 1 SR	DSC
26	6	VOX 2 SC	DSC
27	7	VOX 3 SL	DSC
28	8	VOX 4	DSC
29			
30		VOX DRUMS	HOME RUN
31	7	DJ L	
32	8	DJ R	

PATCH		OUTPUT	LOCATION
1		MON 1	SR
2		MON 2	SC
3		MON 3	SL
4		DRUM TOP	DRUMS
5		DRUM SUB	DRUMS
6			
7		HW IEM L	DRUMS
8		HW IEM R	DRUMS
9			
10			
11			
12			
13		SUB	
14		FILL	N/A
15		FOH L	
16		FOH R	

Contact Harry @ winstondecline@gmail.com for any queries